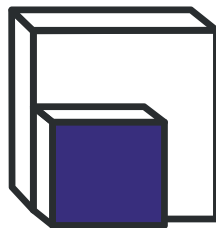
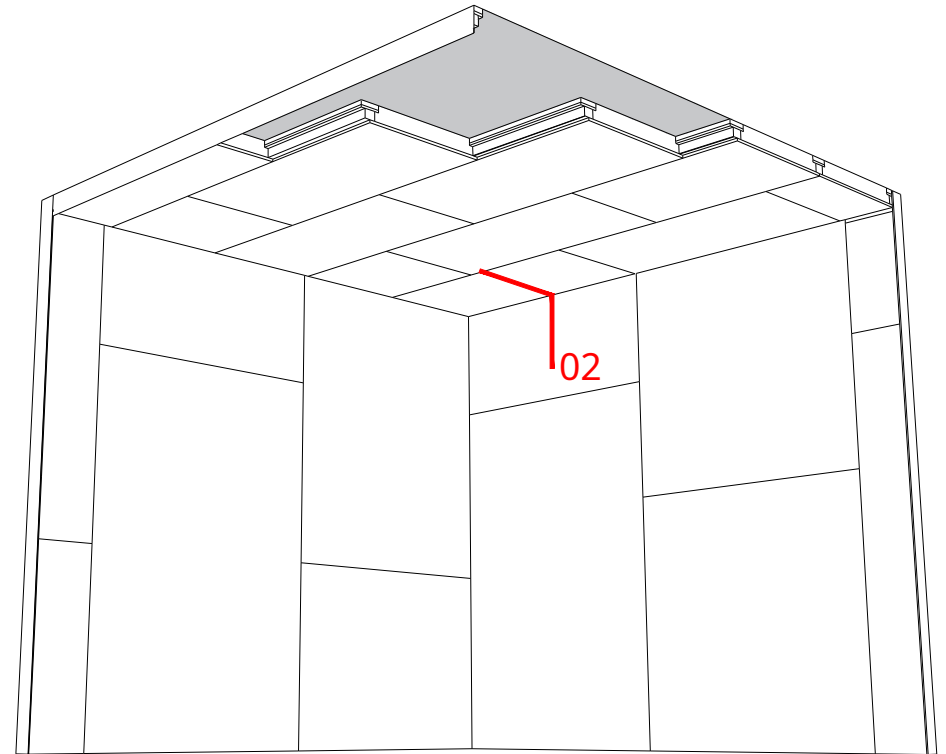
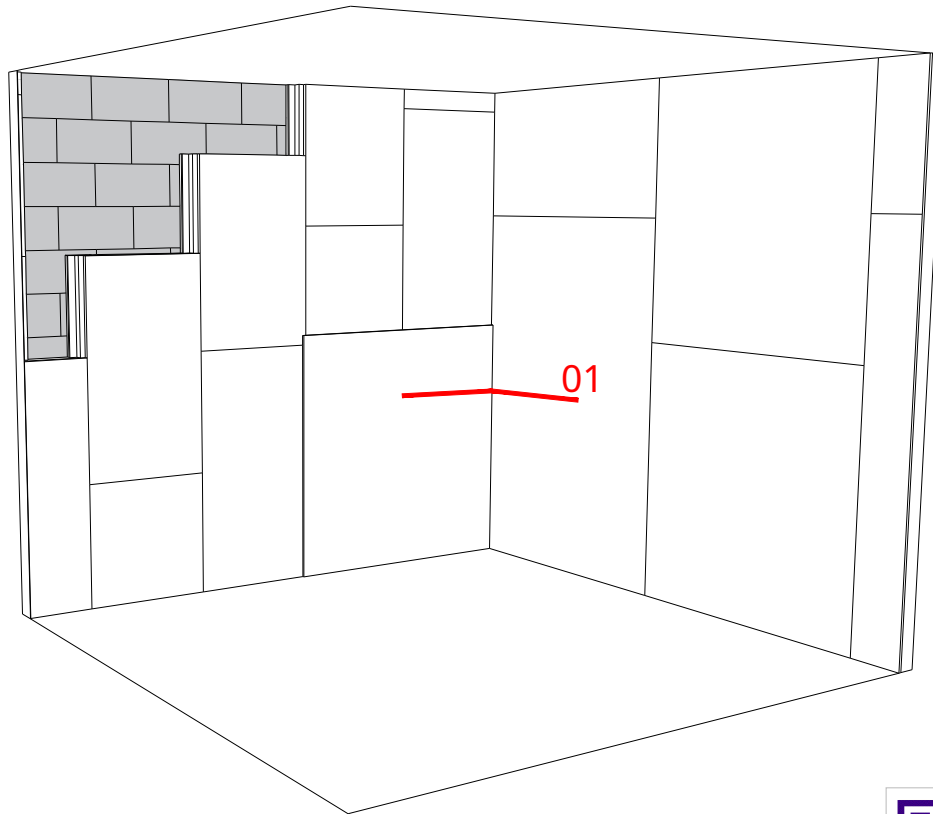


PHONOTECH PH ASSEMBLY INSTRUCTIONS  
**PARTITIONS AND CEILINGS**



JUNCTION BETWEEN 2 PARTITIONS

JUNCTION BETWEEN PARTITIONS / CEILING



VIDEO

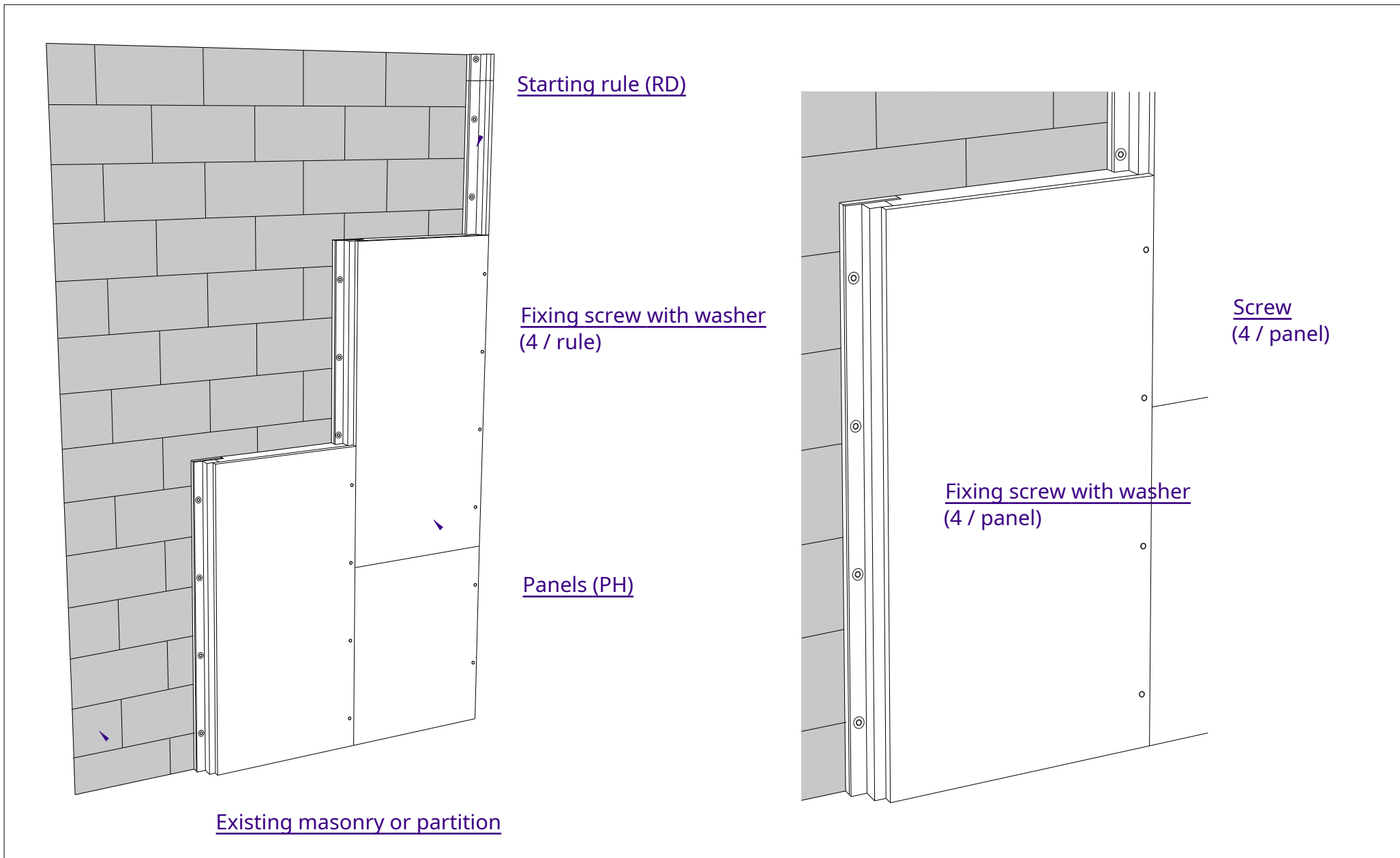


Detail 1. Horizontal section at corner of a wall

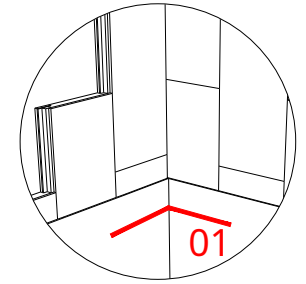
Detail 2. Vertical section at the junction between wall & ceiling



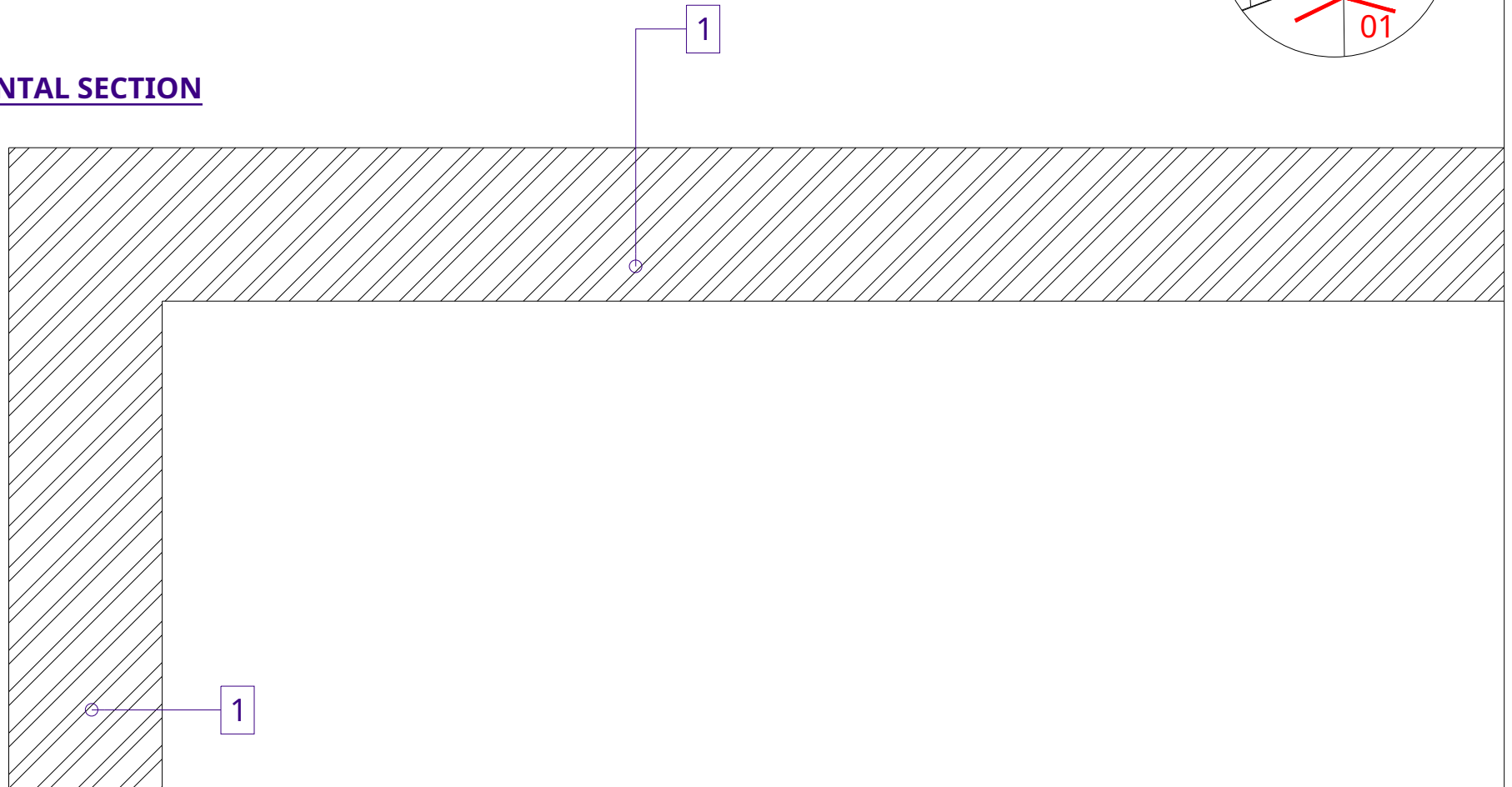
**- For floors, refer to the assembly instructions for PHONOTECH VR panels**



- The fixing screws ( $\varnothing 4.8$  mm) in the support are associated with a zinc-plated washer ( $e=12.5$ mm) of  $\varnothing 30$ mm with a hole of  $\varnothing 6.4$ mm
- The screws for fixing the PH panels to the starting rule or between them are done using screws for FERMACELL panels



**HORIZONTAL SECTION**



1. Supporting structure: Masonry, partition, ...

2. Self-adhesive uncoupling strip

3. PHONOTECH RD starting rule (vertical)

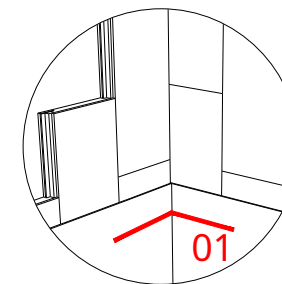
4. PHONOTECH PH acoustic panels (600 x 1200 mm)

5. Plasterboards (12.5 mm)

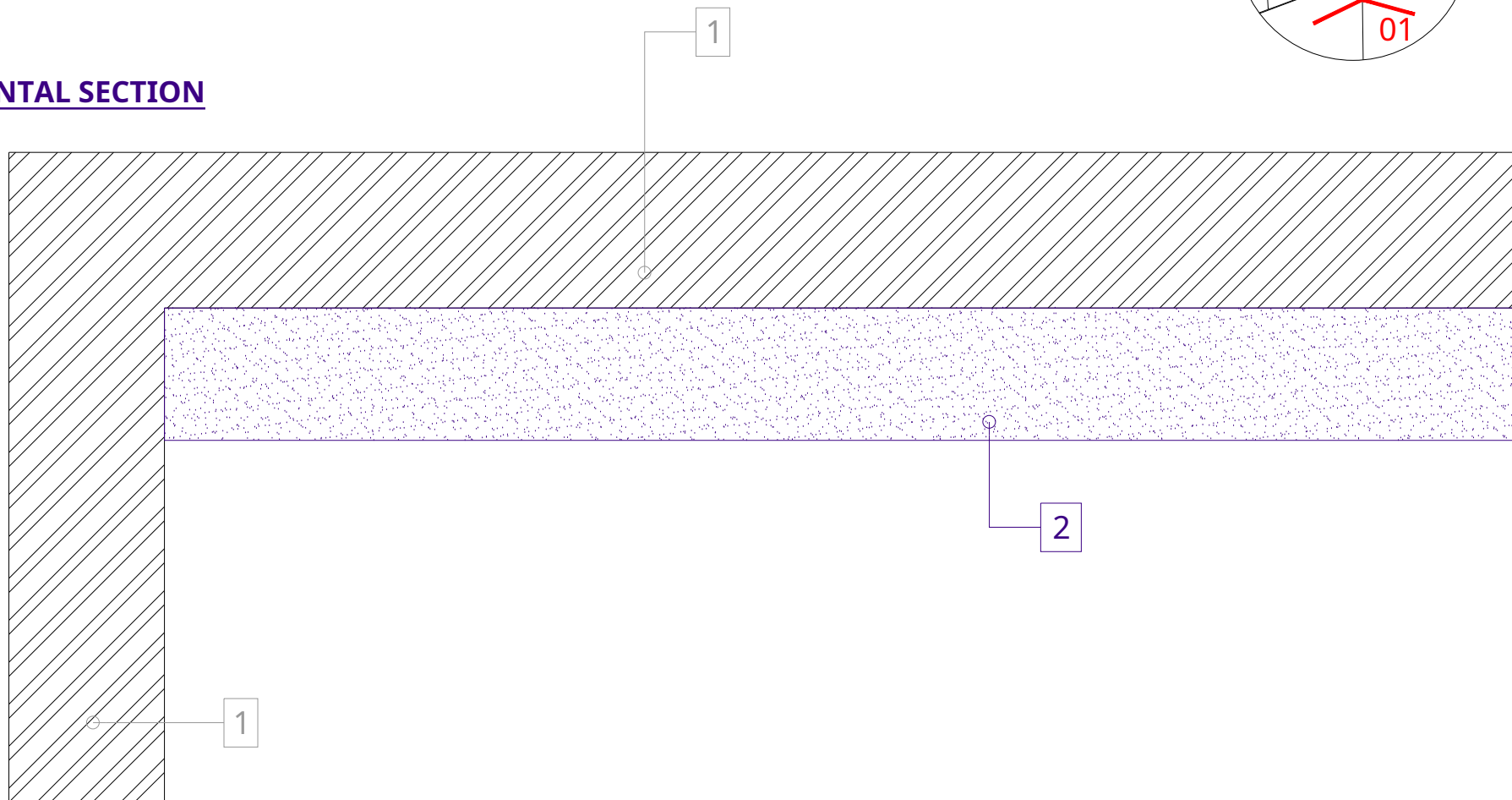
6. Peripheral acrylic seal



- *The separation strip will be as wide as the PHONOTECH PH acoustic complex (refer to the technical sheet of the chosen system)*
- *The uncoupling strip will be self-adhesive and placed both on the floor and on the ceiling*



**HORIZONTAL SECTION**

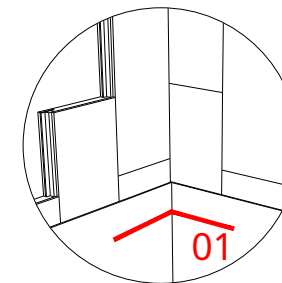


- 1. Supporting structure: Masonry, partition, ...
- 2. Self-adhesive uncoupling strip
- 3. PHONOTECH RD starting rule (vertical)

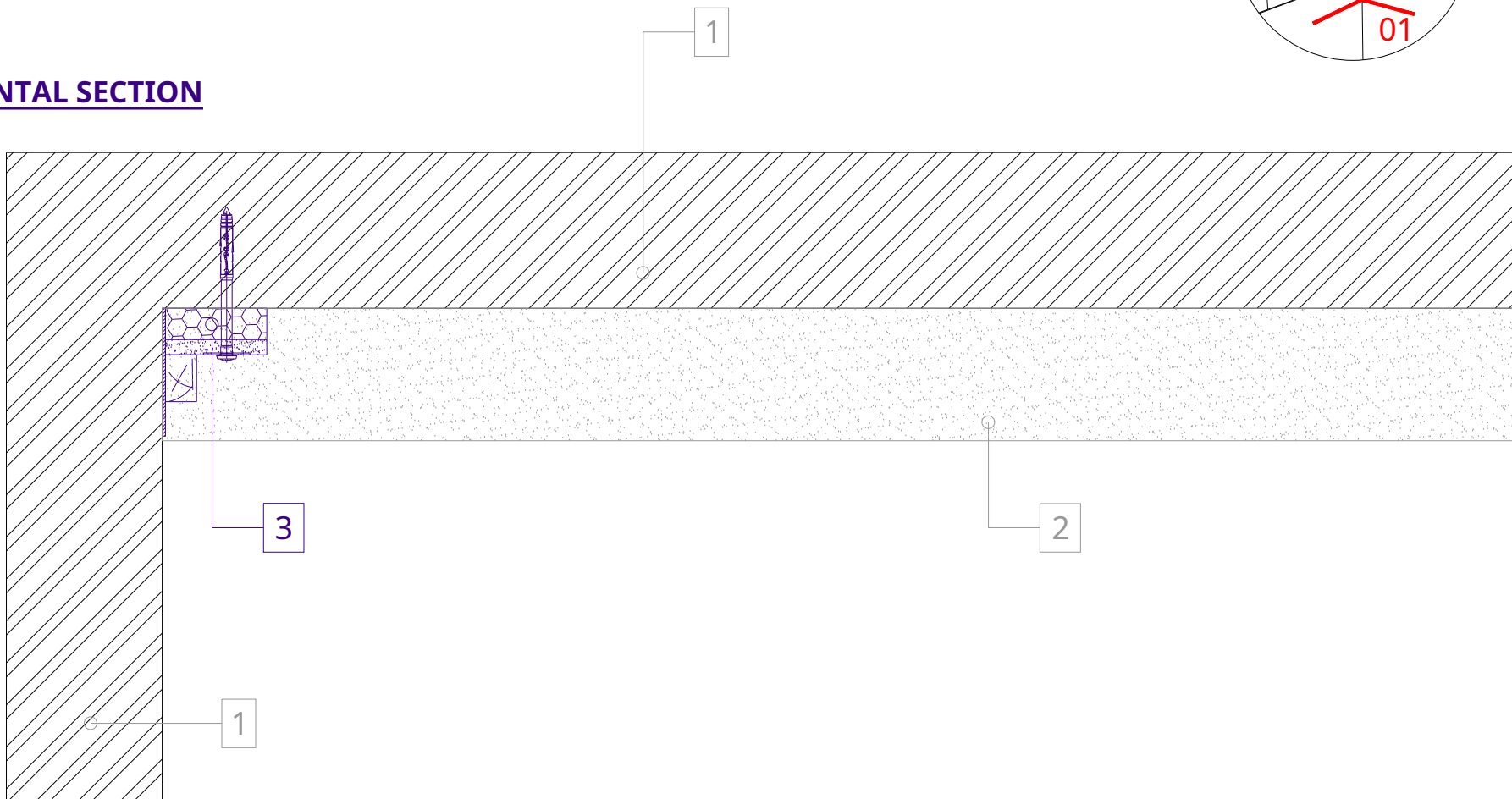
- 4. PHONOTECH PH acoustic panels (600 x 1200 mm)
- 5. Plasterboards (12.5 mm)
- 6. Peripheral acrylic seal



- The starting rule (RD) is fixed using suitable dowels and screws
- Compress the mattress for tightening
- The last rule is to cut to size



**HORIZONTAL SECTION**

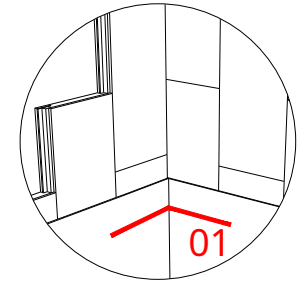


1. Supporting structure: Masonry, partition, ...
2. Self-adhesive uncoupling strip
3. PHONOTECH RD starting rule (vertical)

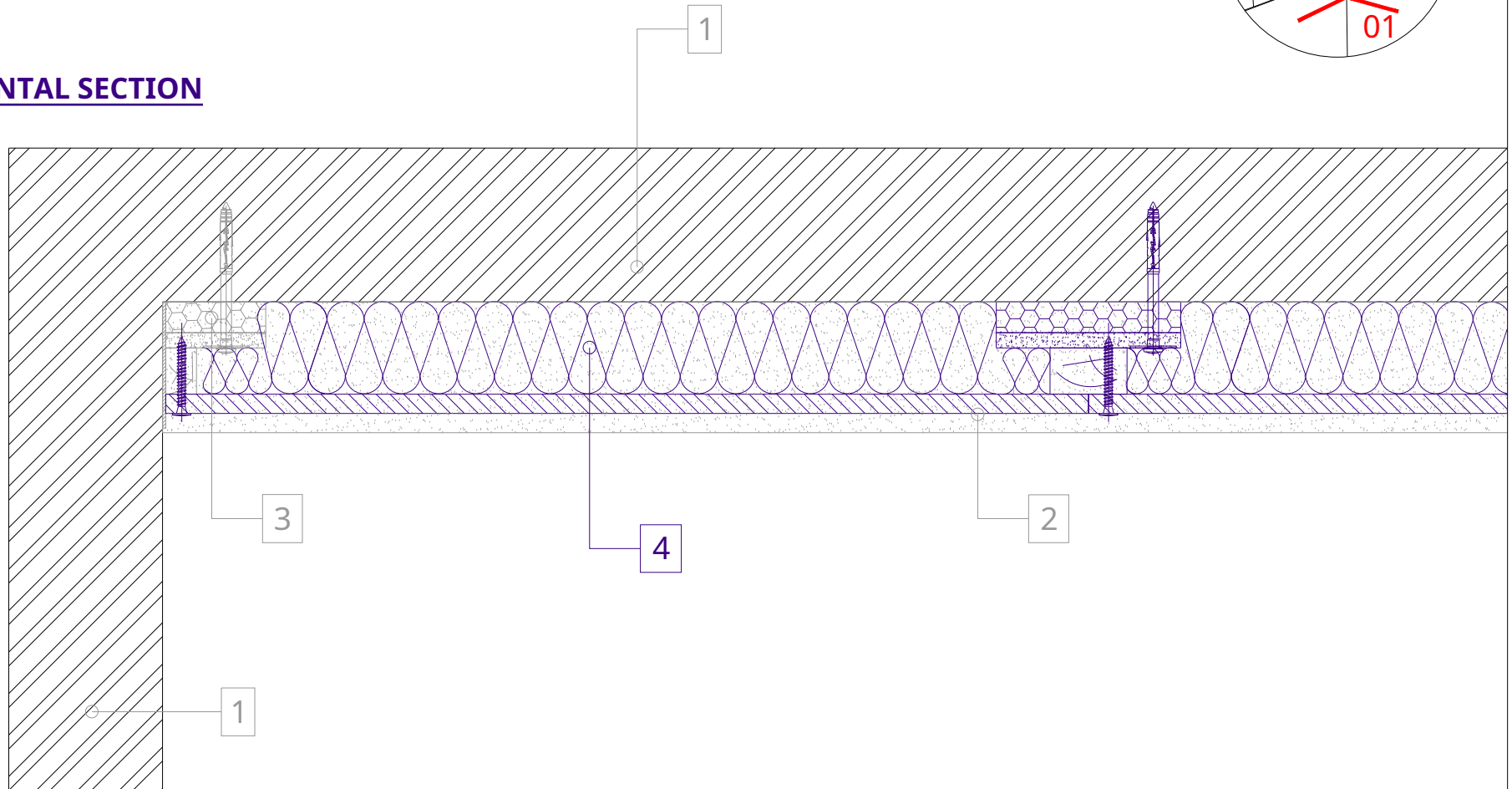
4. PHONOTECH PH acoustic panels (600 x 1200 mm)
5. Plasterboards (12.5 mm)
6. Peripheral acrylic seal



- *Compress the mattress for tightening*
- *Do not fold down the felt of the starting rule (RD)*

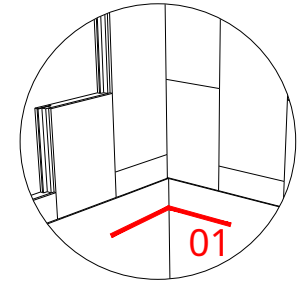


**HORIZONTAL SECTION**

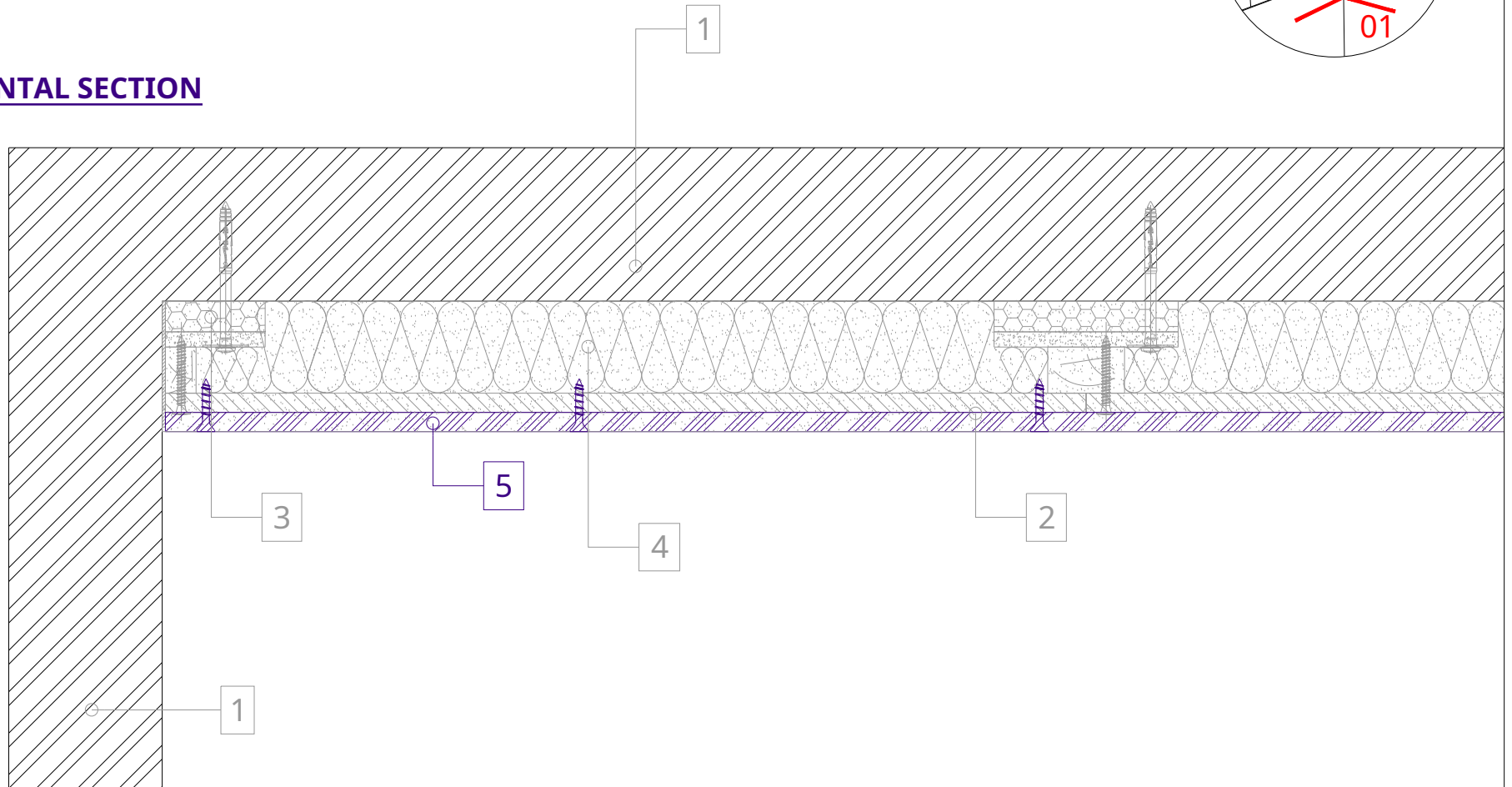


- 1. Supporting structure: Masonry, partition, ...
- 2. Self-adhesive uncoupling strip
- 3. PHONOTECH RD starting rule (vertical)

- 4. PHONOTECH PH acoustic panels (600 x 1200 mm)
- 5. Plasterboards (12.5 mm)
- 6. Peripheral acrylic seal



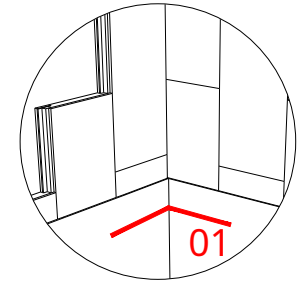
**HORIZONTAL SECTION**



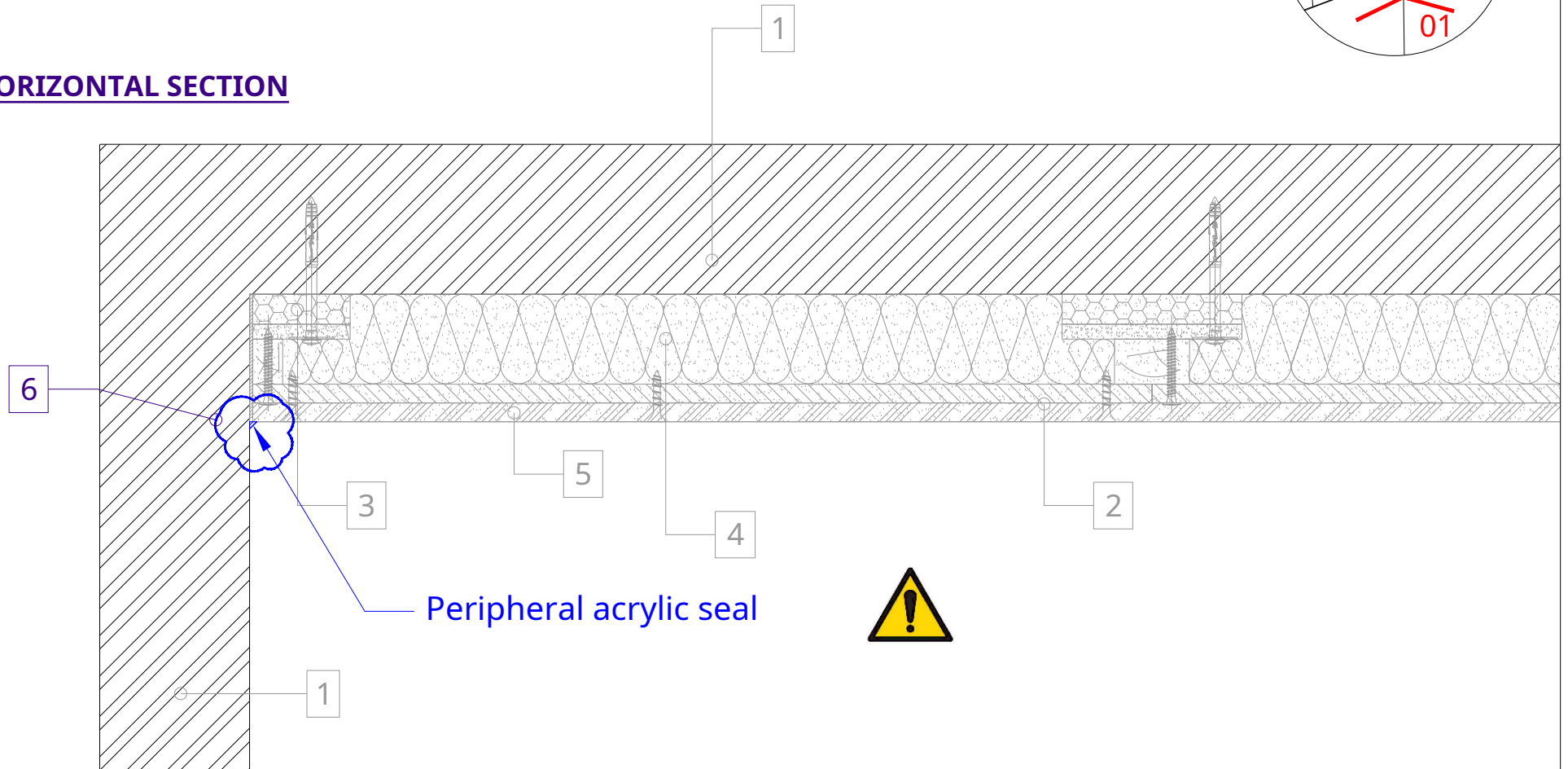
- 1. Supporting structure: Masonry, partition, ...
- 2. Self-adhesive uncoupling strip
- 3. PHONOTECH RD starting rule (vertical)

- 4. PHONOTECH PH acoustic panels (600 x 1200 mm)
- 5. Plasterboards (12.5 mm)
- 6. Peripheral acrylic seal





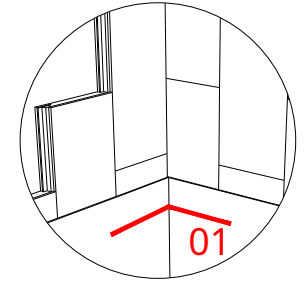
**HORIZONTAL SECTION**



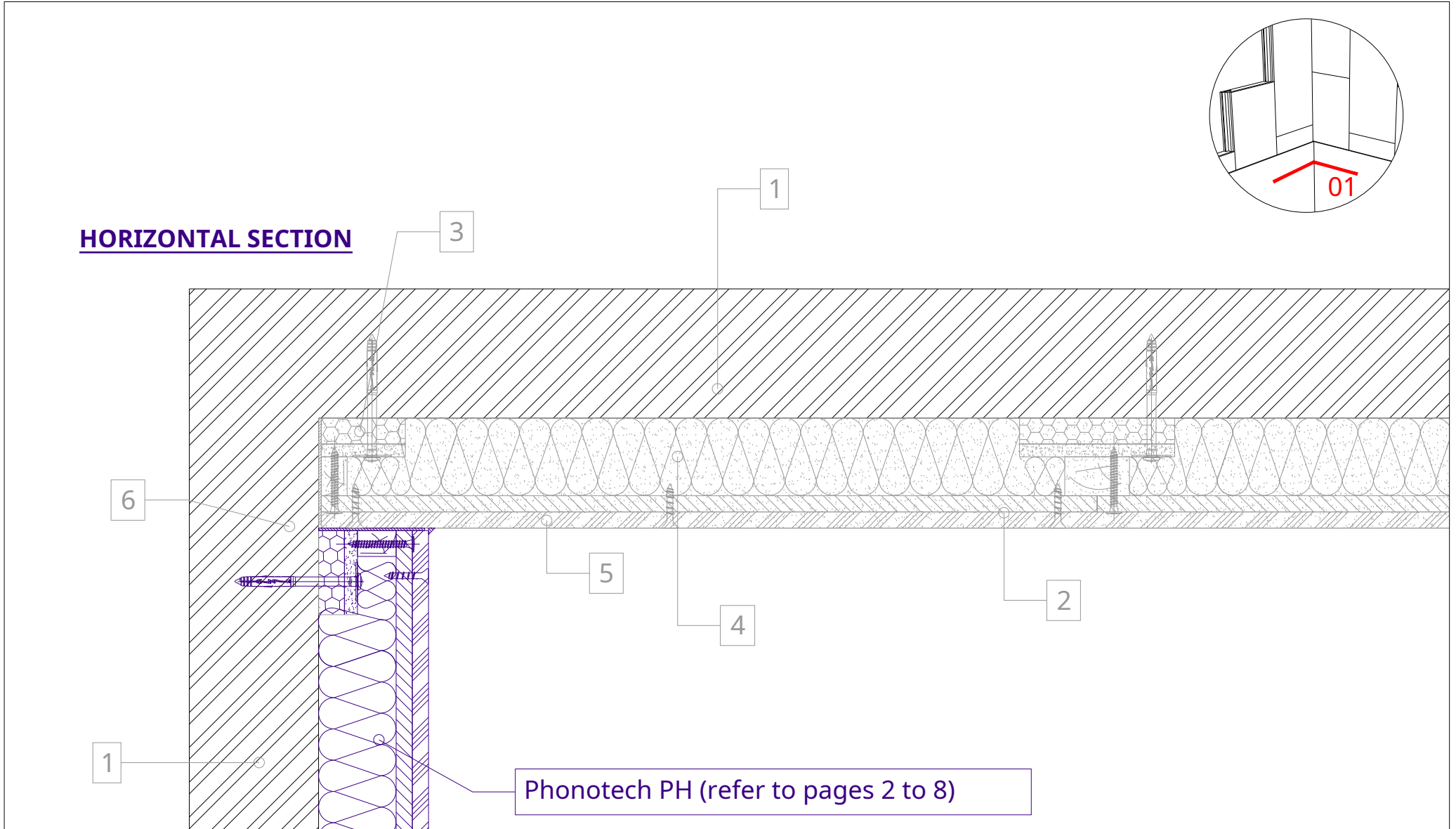
Peripheral acrylic seal

- 1. Supporting structure: Masonry, partition, ...
- 2. Self-adhesive uncoupling strip
- 3. PHONOTECH RD starting rule (vertical)

- 4. PHONOTECH PH acoustic panels (600 x 1200 mm)
- 5. Plasterboards (12.5 mm)
- 6. Peripheral acrylic seal

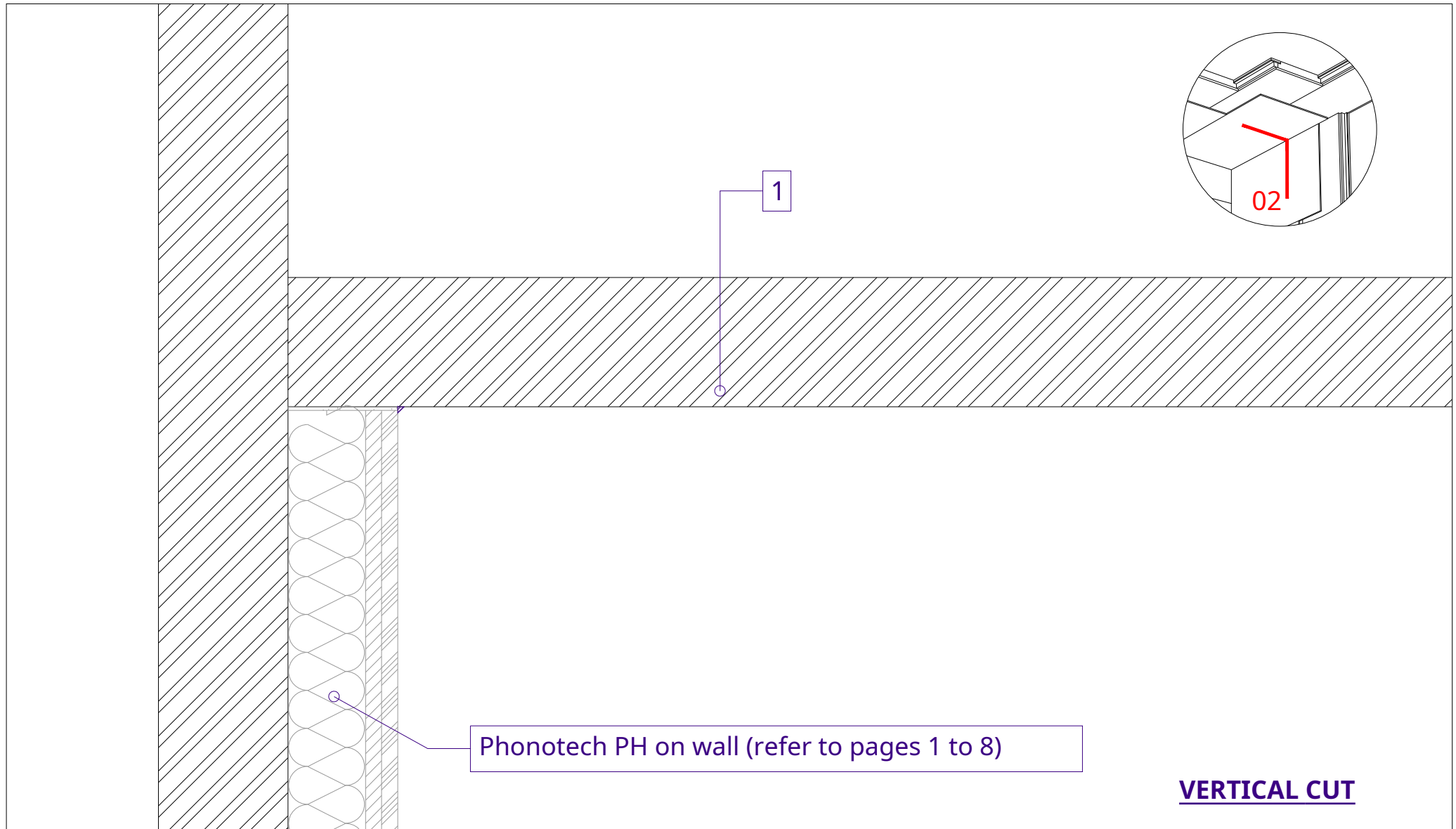


**HORIZONTAL SECTION**



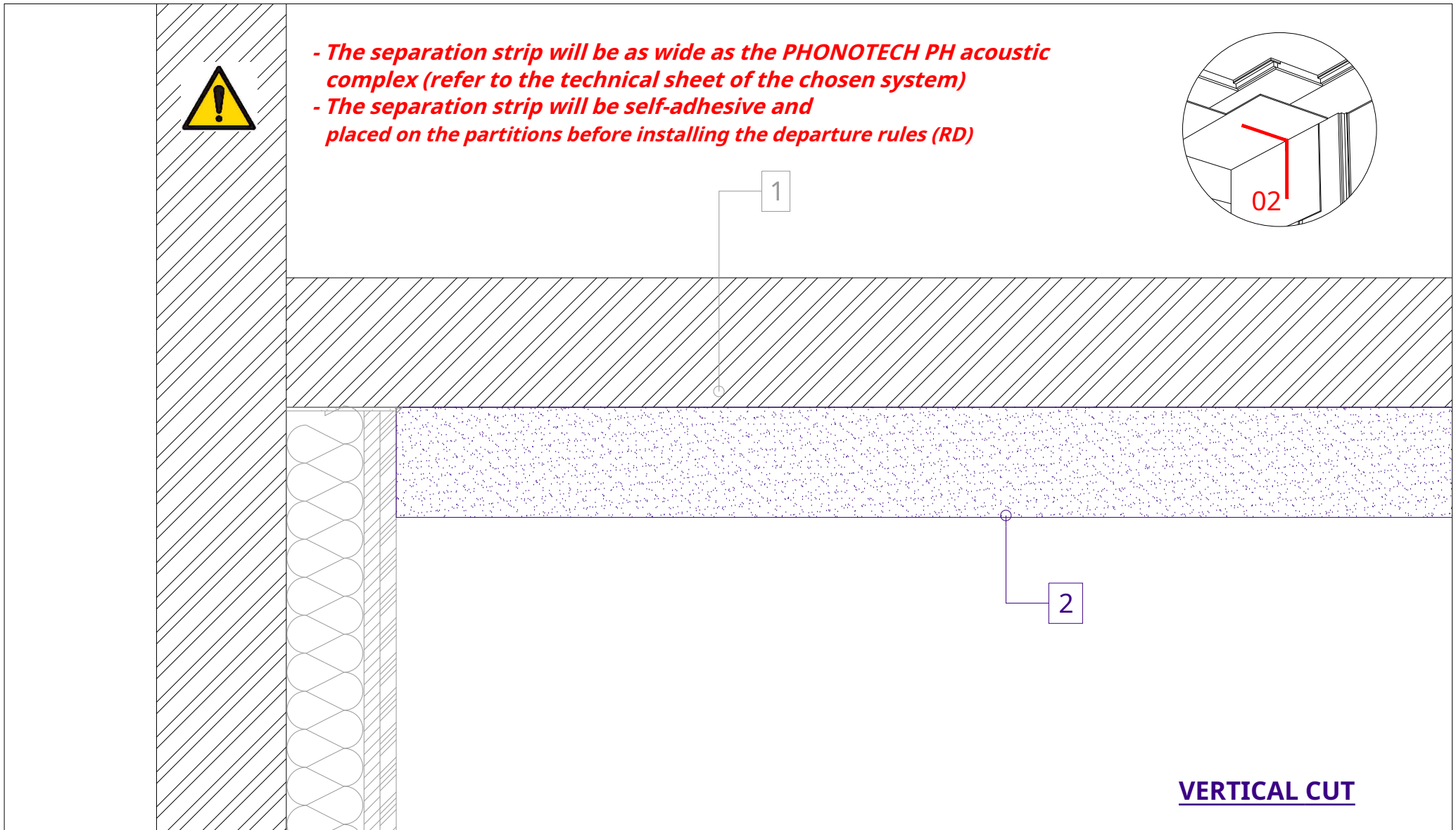
- 1. Supporting structure: Masonry, partition, ...
- 2. Self-adhesive uncoupling strip
- 3. PHONOTECH RD starting rule (vertical)

- 4. PHONOTECH PH acoustic panels (600 x 1200 mm)
- 5. Plasterboards (12.5 mm)
- 6. Peripheral acrylic seal



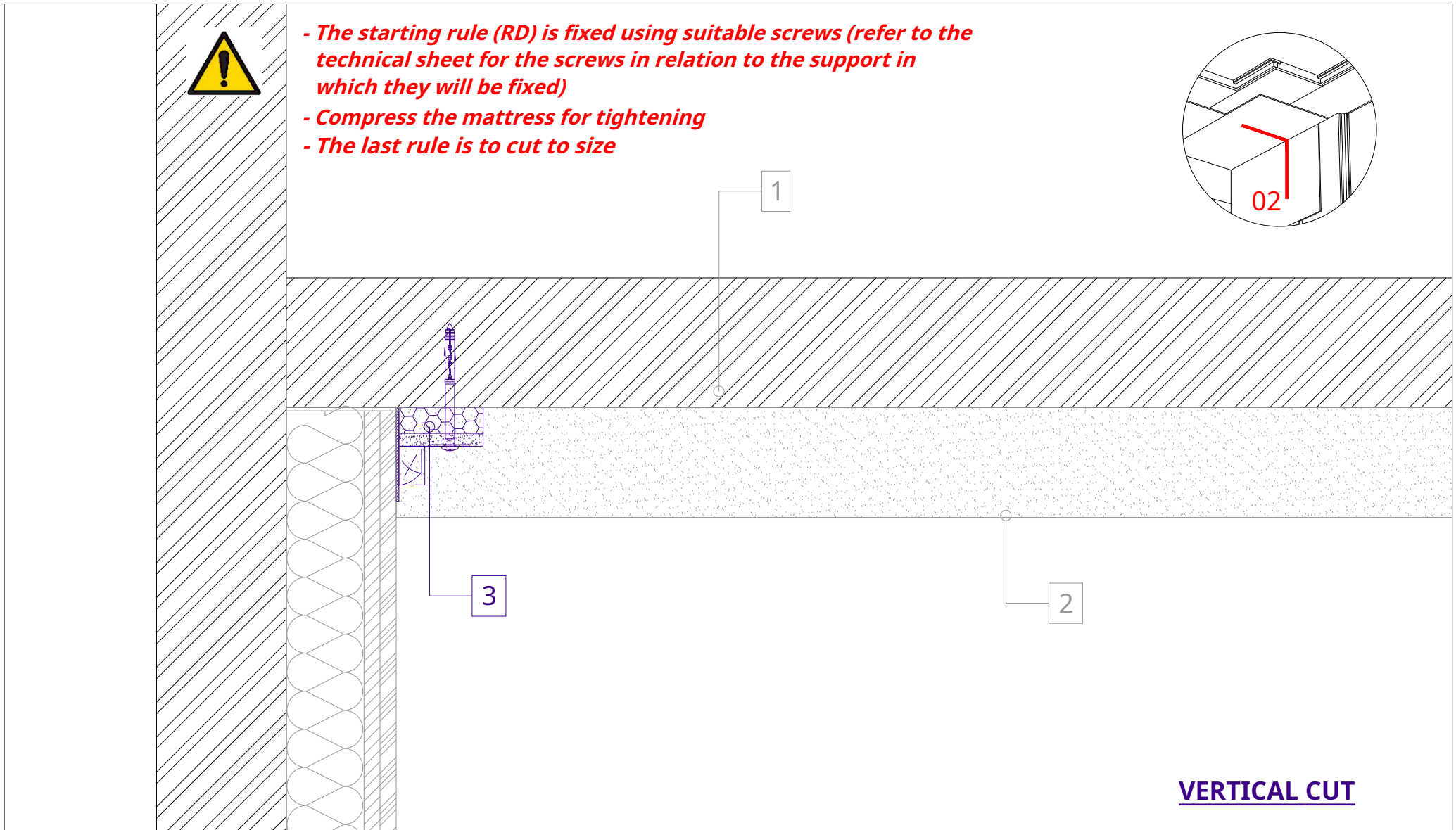
- 1. Supporting structure: wood, concrete, etc.
- 2. Self-adhesive uncoupling strip
- 3. PHONOTECH RD starting rule (horizontal)

- 4. PHONOTECH PH acoustic panels (600 x 1200 mm)
- 5. Plasterboards (12.5 mm)
- 6. Peripheral acrylic seal



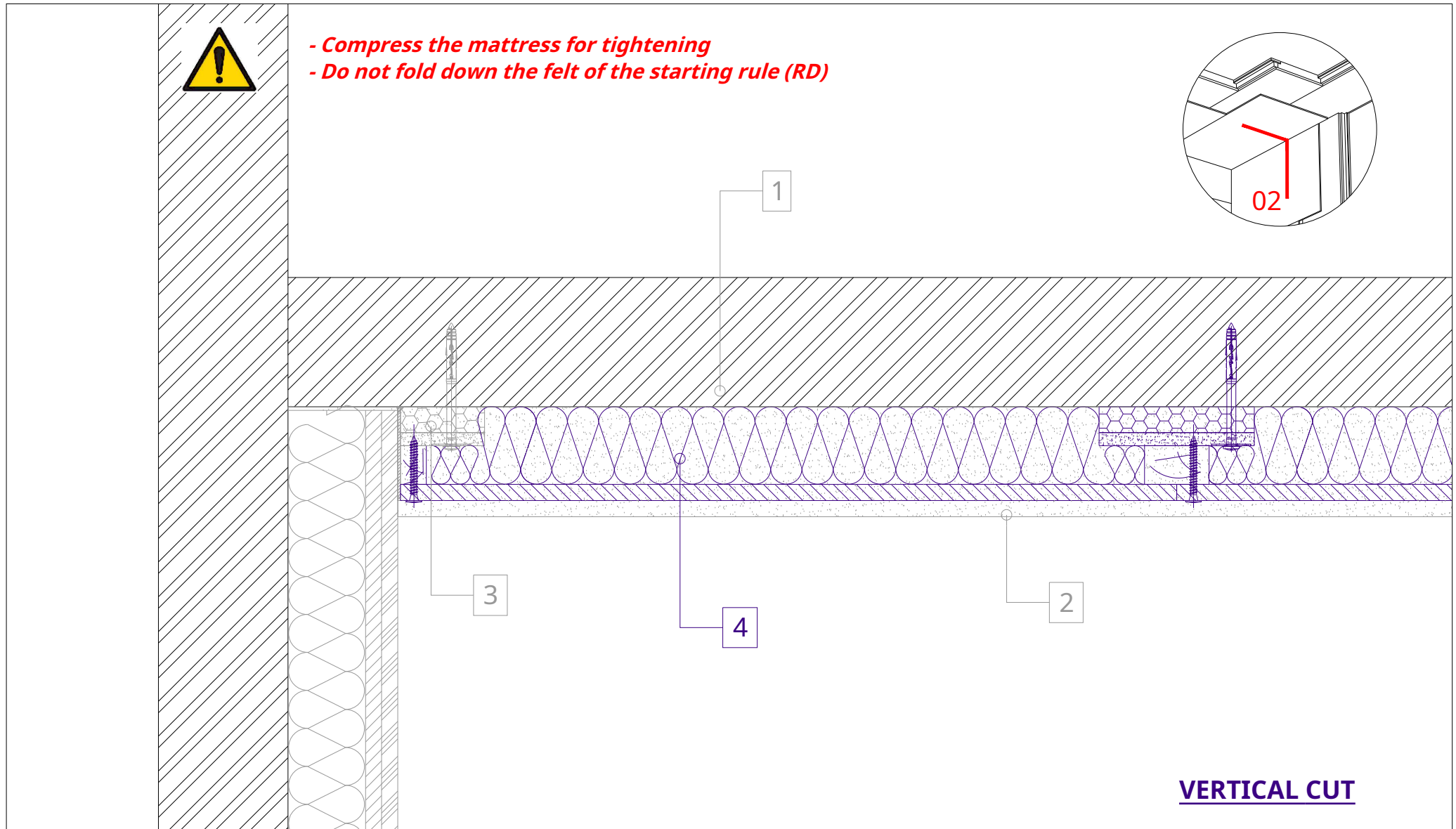
- 1. Supporting structure: wood, concrete, etc.
- 2. Self-adhesive uncoupling strip
- 3. PHONOTECH RD starting rule (horizontal)

- 4. PHONOTECH PH acoustic panels (600 x 1200 mm)
- 5. Plasterboards (12.5 mm)
- 6. Peripheral acrylic seal



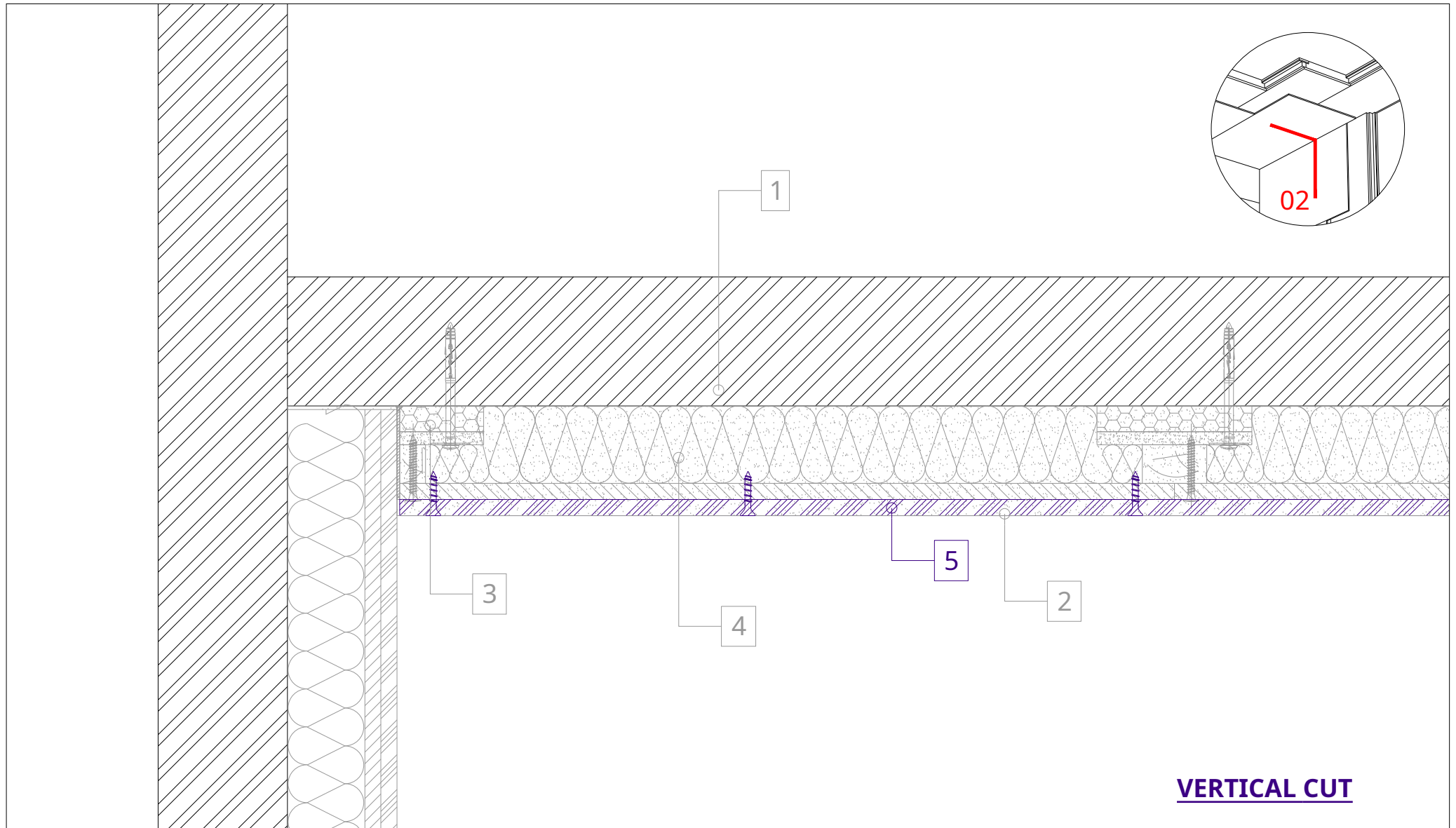
- 1. Supporting structure: wood, concrete, etc.
- 2. Self-adhesive uncoupling strip
- 3. PHONOTECH RD starting rule (vertical)

- 4. PHONOTECH PH acoustic panels (600 x 1200 mm)
- 5. Plasterboards (12.5 mm)
- 6. Peripheral acrylic seal



- 1. Supporting structure: wood, concrete, etc.
- 2. Self-adhesive uncoupling strip
- 3. PHONOTECH RD starting rule (vertical)

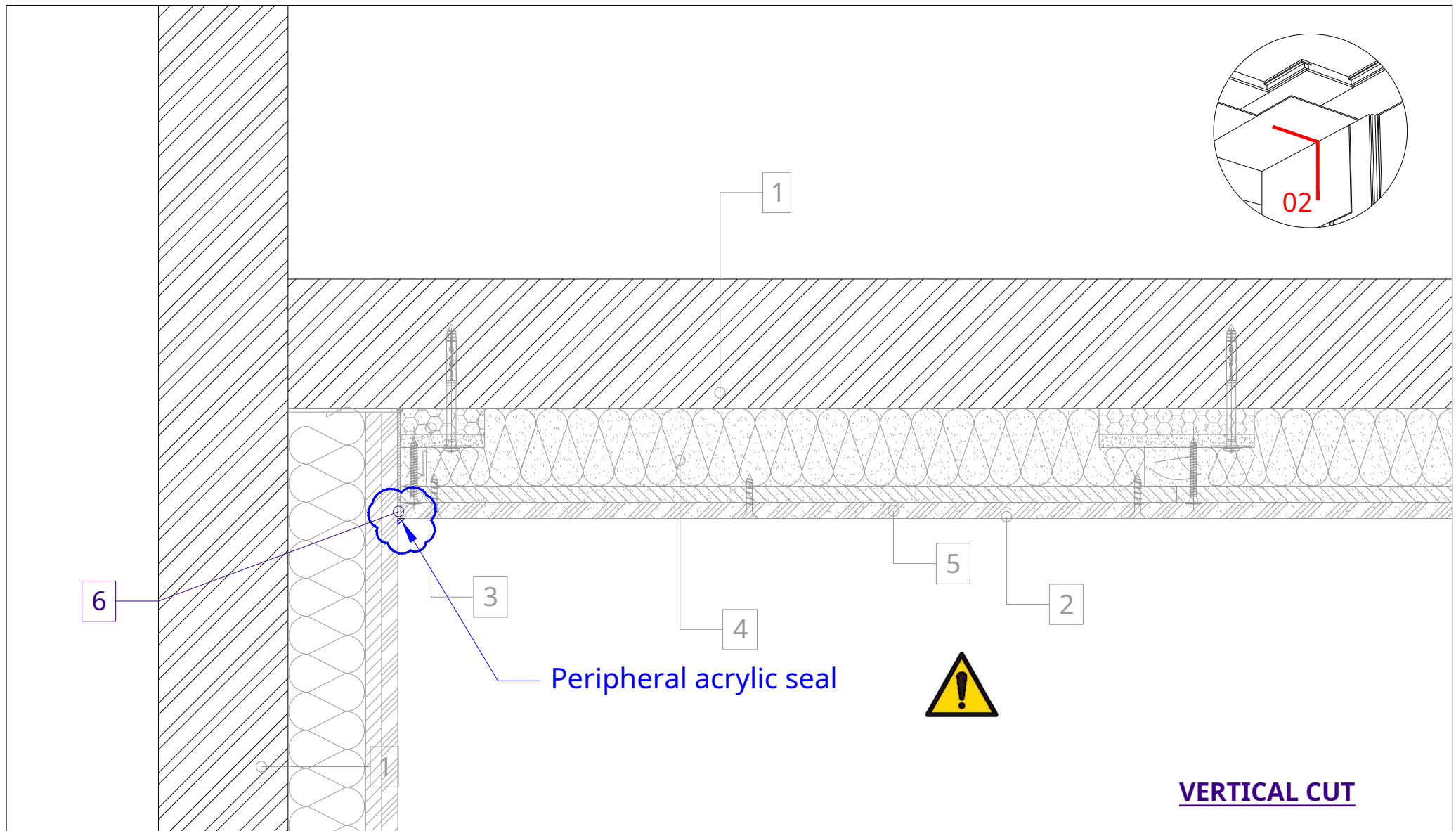
- 4. PHONOTECH PH acoustic panels (600 x 1200 mm)
- 5. Plasterboards (12.5 mm)
- 6. Peripheral acrylic seal



**VERTICAL CUT**

- 1. Supporting structure: wood, concrete, etc.
- 2. Self-adhesive uncoupling strip
- 3. PHONOTECH RD starting rule (vertical)

- 4. PHONOTECH PH acoustic panels (600 x 1200 mm)
- 5. Plasterboards (12.5 mm)
- 6. Peripheral acrylic seal



**VERTICAL CUT**

- 1. Supporting structure: wood, concrete, etc.
- 2. Self-adhesive uncoupling strip
- 3. PHONOTECH RD starting rule (vertical)

- 4. PHONOTECH PH acoustic panels (600 x 1200 mm)
- 5. Plasterboards (12.5 mm)
- 6. Peripheral acrylic seal